

Richmond Square

Houston, TX



Center Highlights

Located in the shadows of the Houston Galleria, with tremendous access to and visibility from Loop 610, Richmond Square thrives with its affluent area and some of the strongest demographics in the metro area. Tenanted with national retailers, Best Buy, and Cost Plus World Market, Richmond Square establishes its place as a preeminent retail shopping destination.

Center Address: Richmond at I-610

City/State: Houston, TX

Population: 3 mile radius – 194,974 people

Avg. Household Income: \$110,744

Traffic Counts: Richmond at I-610 - 51,800

Property Size: 93,944 sq. ft.

Latitude/Longitude: 29.731043 N, -95.461393 W

Leasing Executive

Brody Farris

Phone: (713) 866-6945

Fax: (713) 866-6049

Email: bfarris@weingarten.com

Property Manager

Jennifer W Roeser

Phone: (713) 866-6982

Fax: (713) 866-6992

Email: jroeser@weingarten.com

WEINGARTEN REALTY

People-to-People. Coast-to-Coast.



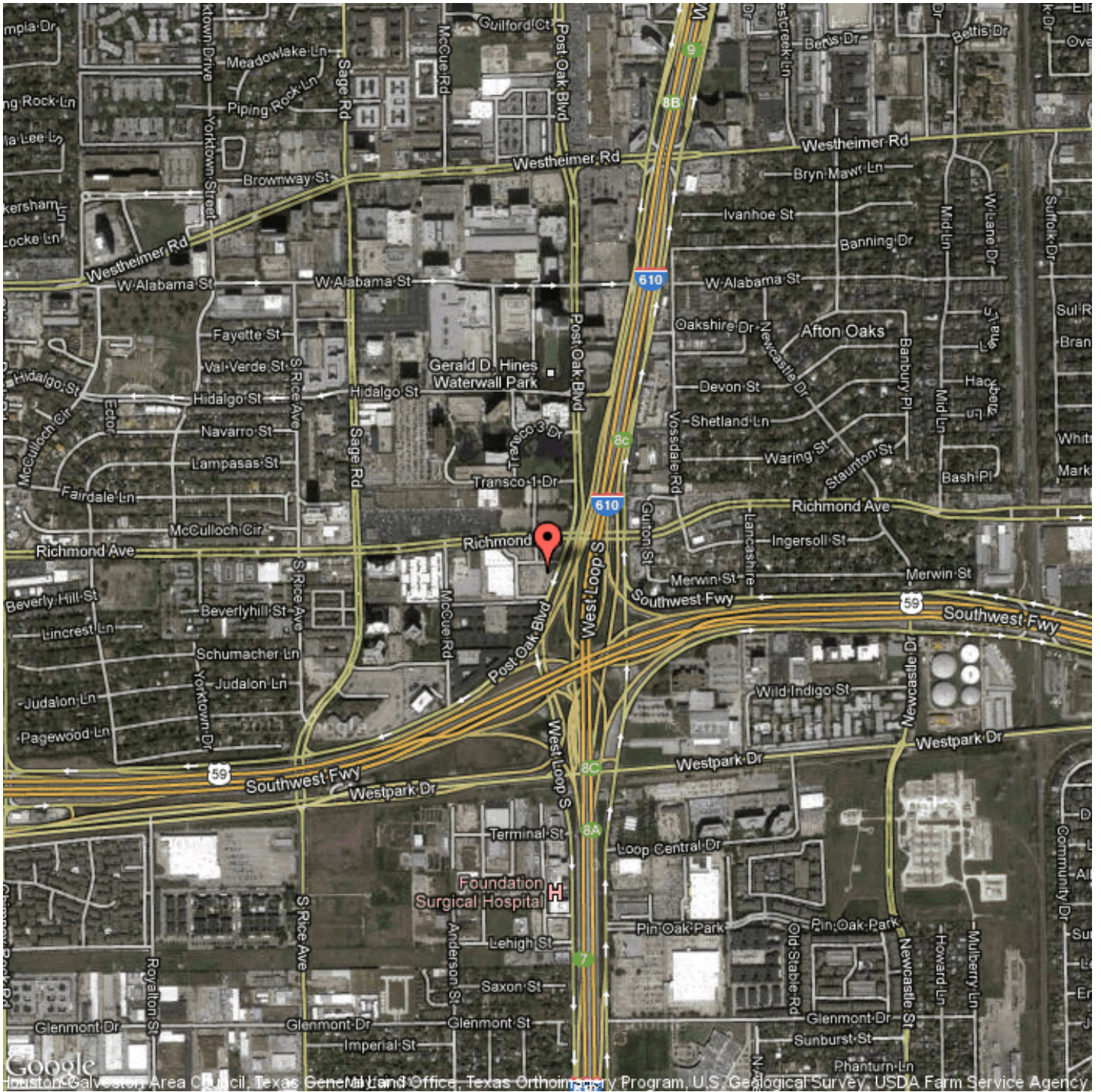
TENANT LIST

- A0A Cost Plus World Market
- A0D 3 Day Blinds
- A0H Luggage And Leather
- B0A Best Buy
- R0A Chick-Fil-A

Richmond Square

Houston, TX

Google Map



WEINGARTEN REALTY

People-to-People. Coast-to-Coast.

Summary Report

WEINGARTEN REALTY

People-to-People. Coast-to-Coast.

L185 Richmond Square
Richmond at I-610 - Houston, TX

Longitude: -95.461393

Latitude: 29.731043

Key Variables	1.00 Mile Radius	2.00 Mile Radius	3.00 Mile Radius	5.00 Mile Radius
Population	18,126	96,435	194,974	460,870
Average Household Income	\$103,863	\$105,633	\$110,744	\$99,638

Population				
2016 Population	20,738	104,638	208,866	495,397
2011 Population	18,126	96,435	194,974	460,870
2010 Census Population	17,537	94,807	192,693	454,588
2000 Census Population	13,610	84,910	178,194	422,950
% Growth 2010 to 2011	3.36%	1.72%	1.18%	1.38%
% Forecasted Growth 2011 to 2016	14.41%	8.51%	7.12%	7.49%

Race & Ethnicity				
% White	61.26%	49.41%	49.73%	48.78%
% Black	6.40%	6.86%	6.18%	9.26%
% Asian	12.10%	8.66%	8.78%	9.20%
% Other	2.06%	1.80%	1.83%	1.94%
% Hispanic	18.18%	33.27%	33.49%	30.81%

Income & Education				
Median Household Income	\$76,840	\$66,829	\$66,661	\$61,745
Average Household Income	\$103,863	\$105,633	\$110,744	\$99,638
% College Graduates	66.32%	58.20%	57.84%	54.05%

Age				
Median Age	34.6	34.1	34.4	34.5
% Age < 18	14.41%	20.96%	22.49%	20.91%
% Age 65 +	10.73%	9.60%	10.14%	10.44%

Households & Housing				
Households	10,443	46,269	87,832	209,722
Average Household Size	1.73	2.08	2.21	2.16
Median Housing Value	\$303,837	\$327,273	\$339,424	\$258,213
% Owner Occupied Housing	28.29%	30.35%	34.47%	36.72%
% Renter Occupied Housing	59.41%	56.92%	53.81%	51.92%
% Vacant Housing	12.30%	12.73%	11.71%	11.36%

Workplace & Workers				
Number of Businesses	2,136	7,233	12,135	22,469
Total Number of Employees (FTE)	47,038	143,641	220,832	466,041
% White Collar	88.10%	78.99%	78.37%	76.97%
% Blue Collar	11.90%	21.01%	21.63%	23.03%