

Cypress Pointe

Houston, TX



Center Highlights

Located on FM 1960 just west of I-45, Cypress Pointe enjoys a premier location near one of the Houston area's busiest intersections, providing tremendous exposure to the high-density trade area. The center thrives around its anchors—Kroger, Office Depot and Babies R Us. For information on adjoining property, also see Cypress Station Square.

Center Address: FM 1960 at Cypress Station Dr

City/State: Houston, TX

Population: 3 mile radius – 88,671 people

Avg. Household Income: \$69,852

Traffic Counts: FM 1960 at Cypress Station Dr - 46,000

Property Size: 288,000 sq. ft.

Latitude/Longitude: 30.020422 N, -95.434556 W

Leasing Executive

Adam Blustein

Phone: (713) 866-6942

Fax: (713) 866-6049

Email: ablustein@weingarten.com

Property Manager

Kari Bean

Phone: (713) 880-6194

Fax: (713) 866-6992

Email: kbean@weingarten.com

WEINGARTEN REALTY

People-to-People. Coast-to-Coast.



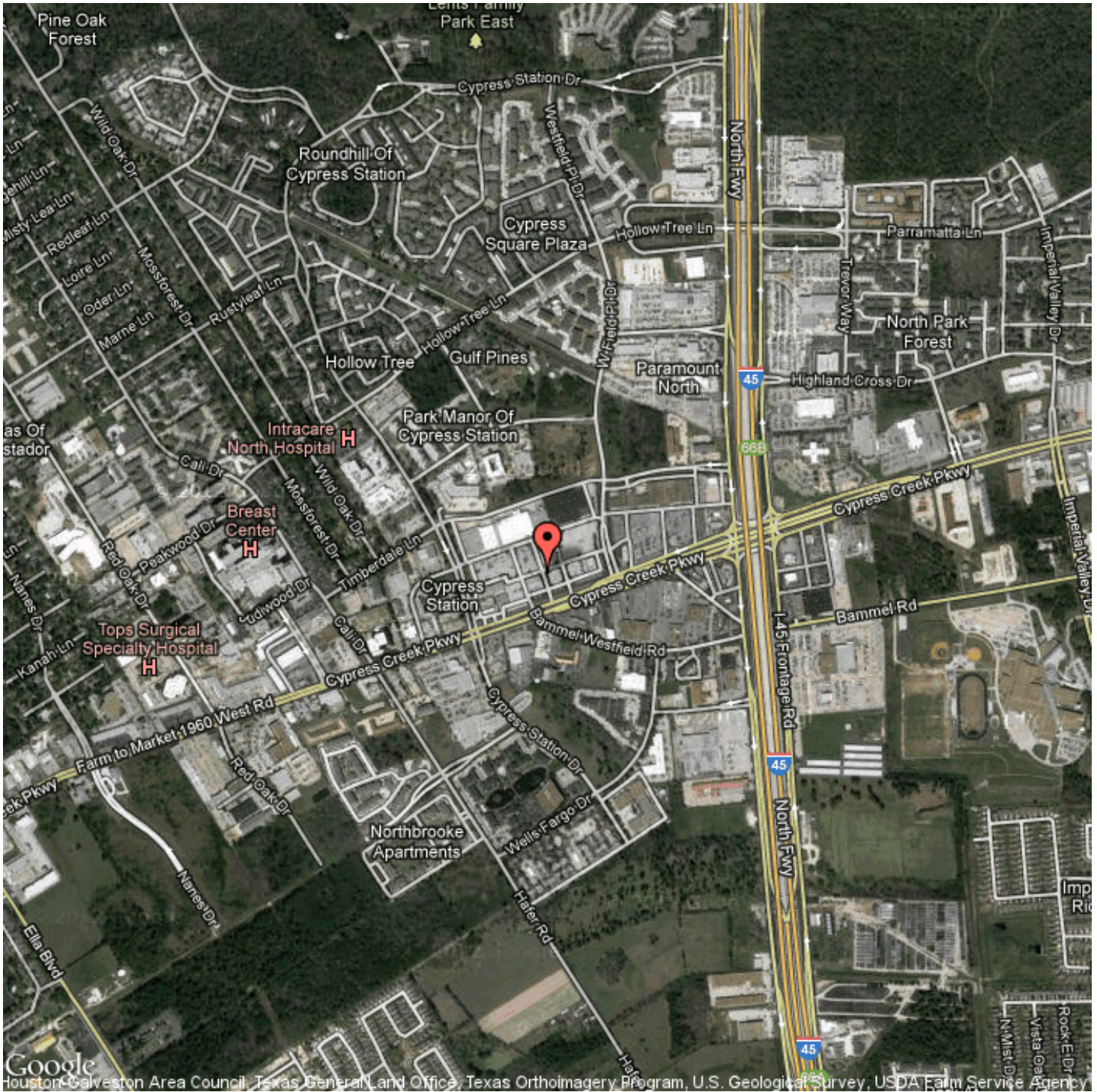
TENANT LIST

- BOA Goodwill
- COA Kroger
- D0A Beauty Supply
- D0H Office Depot
- DOR Babies R Us
- ROA Red Lobster
- RAC Chick-Fil-A
- RAD Tiger Liquor
- RBA Instacell
- RBB Extra Cash
- RBC Hertz
- RBD Quiznos
- RBF Radio Shack
- RB3 A Affordable Insurance
- RCD Available (25' x 60') 1,500 SF
- RED Available (20' x 60') 1,200 SF
- RFD Available (30' x 60') 1,800 SF
- RHD Available (15' x 60') 900 SF
- RJD Casual Nails
- RKD Wingstop
- RLD Babarchie

Cypress Pointe

Houston, TX

Google Map



WEINGARTEN REALTY

People-to-People. Coast-to-Coast.

Summary Report

WEINGARTEN REALTY

People-to-People. Coast-to-Coast.

L160 Cypress Pointe
FM 1960 at Cypress Station Dr - Houston, TX

Longitude: -95.434556

Latitude: 30.020422

Key Variables	1.00 Mile Radius	2.00 Mile Radius	3.00 Mile Radius	5.00 Mile Radius
Population	15,852	46,142	88,671	242,311
Average Household Income	\$49,539	\$63,221	\$69,853	\$71,674

Population				
2016 Population	17,838	49,558	94,904	259,538
2011 Population	15,852	46,142	88,671	242,311
2010 Census Population	15,288	45,450	87,676	239,269
2000 Census Population	12,277	32,374	61,334	162,029
% Growth 2010 to 2011	3.69%	1.52%	1.14%	1.27%
% Forecasted Growth 2011 to 2016	12.52%	7.40%	7.03%	7.11%

Race & Ethnicity				
% White	21.11%	26.57%	31.64%	32.17%
% Black	40.51%	32.46%	29.31%	27.35%
% Asian	2.38%	3.10%	3.93%	5.72%
% Other	2.45%	2.20%	2.07%	2.04%
% Hispanic	33.55%	35.66%	33.05%	32.72%

Income & Education				
Median Household Income	\$40,648	\$47,381	\$52,558	\$56,391
Average Household Income	\$49,539	\$63,221	\$69,853	\$71,674
% College Graduates	31.67%	36.06%	38.47%	36.00%

Age				
Median Age	28.4	30.2	31.2	31.3
% Age < 18	27.63%	28.53%	28.72%	29.92%
% Age 65 +	5.89%	7.52%	7.64%	6.87%

Households & Housing				
Households	6,710	17,384	32,324	83,055
Average Household Size	2.33	2.64	2.74	2.91
Median Housing Value	\$123,830	\$140,372	\$147,070	\$133,688
% Owner Occupied Housing	13.61%	35.64%	43.39%	52.79%
% Renter Occupied Housing	67.92%	49.72%	43.72%	36.91%
% Vacant Housing	18.47%	14.65%	12.90%	10.29%

Workplace & Workers				
Number of Businesses	461	1,144	2,065	5,144
Total Number of Employees (FTE)	9,176	22,117	40,261	89,239
% White Collar	65.25%	67.80%	69.09%	68.28%
% Blue Collar	34.75%	32.20%	30.91%	31.72%