

Humblewood Shopping Center

Humble, TX



Center Highlights

Conveniently located for shoppers from Humble, Kingwood and Atascocita; Humblewood sits in the trade area's retail heart and is directly across from Deerbrook Mall. Three major roads provide excellent access and visibility. Tenants include Kroger, Michael's, DSW, Conn's, Walgreens, Party City and more.

Center Address: US 59 at FM 1960

City/State: Humble, TX

Population: 3 mile radius – 36,462 people

Avg. Household Income: \$57,024

Traffic Counts: US 59 at FM 1960 - 211,000

Property Size: 180,439 sq. ft.

Latitude/Longitude: 30.002814 N, -95.270661 W

Leasing Executive

Adam Blustein

Phone: (713) 866-6942

Fax: (713) 866-6049

Email: ablustein@weingarten.com

Property Manager

Kari Bean

Phone: (713) 880-6194

Fax: (713) 866-6992

Email: kbean@weingarten.com

WEINGARTEN REALTY

People-to-People. Coast-to-Coast.



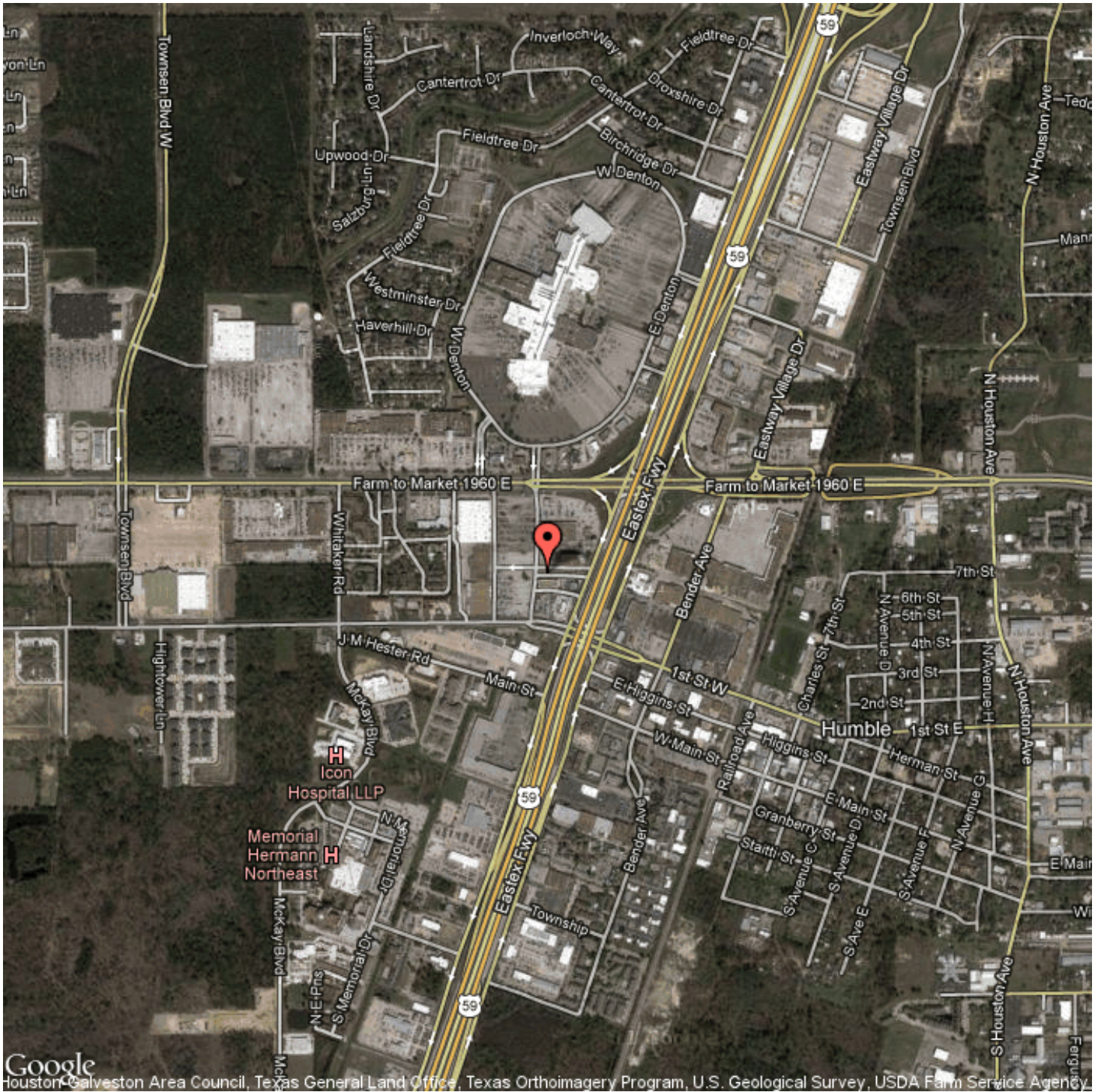
TENANT LIST

- A02 TSO
- A0B Conn's
- A0D Improve My Credit USA
- A0E TGF Haircutters
- B01 Walgreen's
- B05 Nstyle Accessories
- C02 Kroger's
- K01 V Bistro
- K02 Mattress Overstock
- K03 Ace Cash Express
- K04 Starbucks
- K05 Gamestop
- K07 Humble Nails
- K09 TJD Financial Services
- K10 Jason's Deli
- L01 Casual Male
- L02 Value Discount Liquor
- L03 AT&T Moibility
- L06 Party City
- L07 Leslie's Poolmart
- L1A Carus Dental
- M01 Cici's Pizza
- M03 Pack-N-Send
- M04 Speedy Cash
- M05 H & R Block
- M06 Martex Cleaners
- R01 FedEx
- R02 Smoothie King
- R03 Pappas BBQ
- R04 IHOP
- S01 Chick-Fil-A
- S02 Burger King

Humblewood Shopping Center

Humble, TX

Google Map



WEINGARTEN REALTY

People-to-People. Coast-to-Coast.

Summary Report

WEINGARTEN REALTY

People-to-People. Coast-to-Coast.

L106 Humblewood Shopping Center
US 59 at FM 1960 - Houston, TX

Longitude: -95.270661

Latitude: 30.002814

Key Variables	1.00 Mile Radius	2.00 Mile Radius	3.00 Mile Radius	5.00 Mile Radius
Population	5,945	18,491	36,462	108,529
Average Household Income	\$53,744	\$52,869	\$57,025	\$68,629

Population				
2016 Population	6,222	19,975	41,276	124,603
2011 Population	5,945	18,491	36,462	108,529
2010 Census Population	5,950	18,270	35,409	105,415
2000 Census Population	5,341	13,892	22,648	64,773
% Growth 2010 to 2011	-0.08%	1.21%	2.98%	2.95%
% Forecasted Growth 2011 to 2016	4.66%	8.02%	13.20%	14.81%

Race & Ethnicity				
% White	33.47%	29.31%	28.58%	37.27%
% Black	20.83%	28.41%	28.66%	25.31%
% Asian	3.90%	2.76%	2.50%	2.61%
% Other	3.22%	2.63%	2.35%	2.16%
% Hispanic	38.58%	36.89%	37.91%	32.65%

Income & Education				
Median Household Income	\$43,900	\$45,101	\$48,573	\$57,920
Average Household Income	\$53,744	\$52,869	\$57,025	\$68,629
% College Graduates	19.80%	21.32%	22.78%	26.08%

Age				
Median Age	32.6	31.1	31.0	31.6
% Age < 18	24.24%	28.51%	29.71%	29.20%
% Age 65 +	10.66%	8.27%	7.65%	7.54%

Households & Housing				
Households	2,306	6,698	12,579	36,409
Average Household Size	2.54	2.74	2.88	2.89
Median Housing Value	\$116,410	\$109,636	\$110,018	\$116,780
% Owner Occupied Housing	27.19%	41.23%	53.22%	60.00%
% Renter Occupied Housing	60.89%	48.40%	38.24%	33.31%
% Vacant Housing	11.91%	10.38%	8.54%	6.69%

Workplace & Workers				
Number of Businesses	555	952	1,169	2,474
Total Number of Employees (FTE)	11,789	20,138	26,583	60,173
% White Collar	55.27%	58.88%	60.93%	63.03%
% Blue Collar	44.73%	41.12%	39.07%	36.97%