

The logo for Weingarten Realty features the company name in a bold, blue, sans-serif font. The text is centered within a decorative header bar composed of overlapping, semi-transparent geometric shapes in various shades of blue and green.

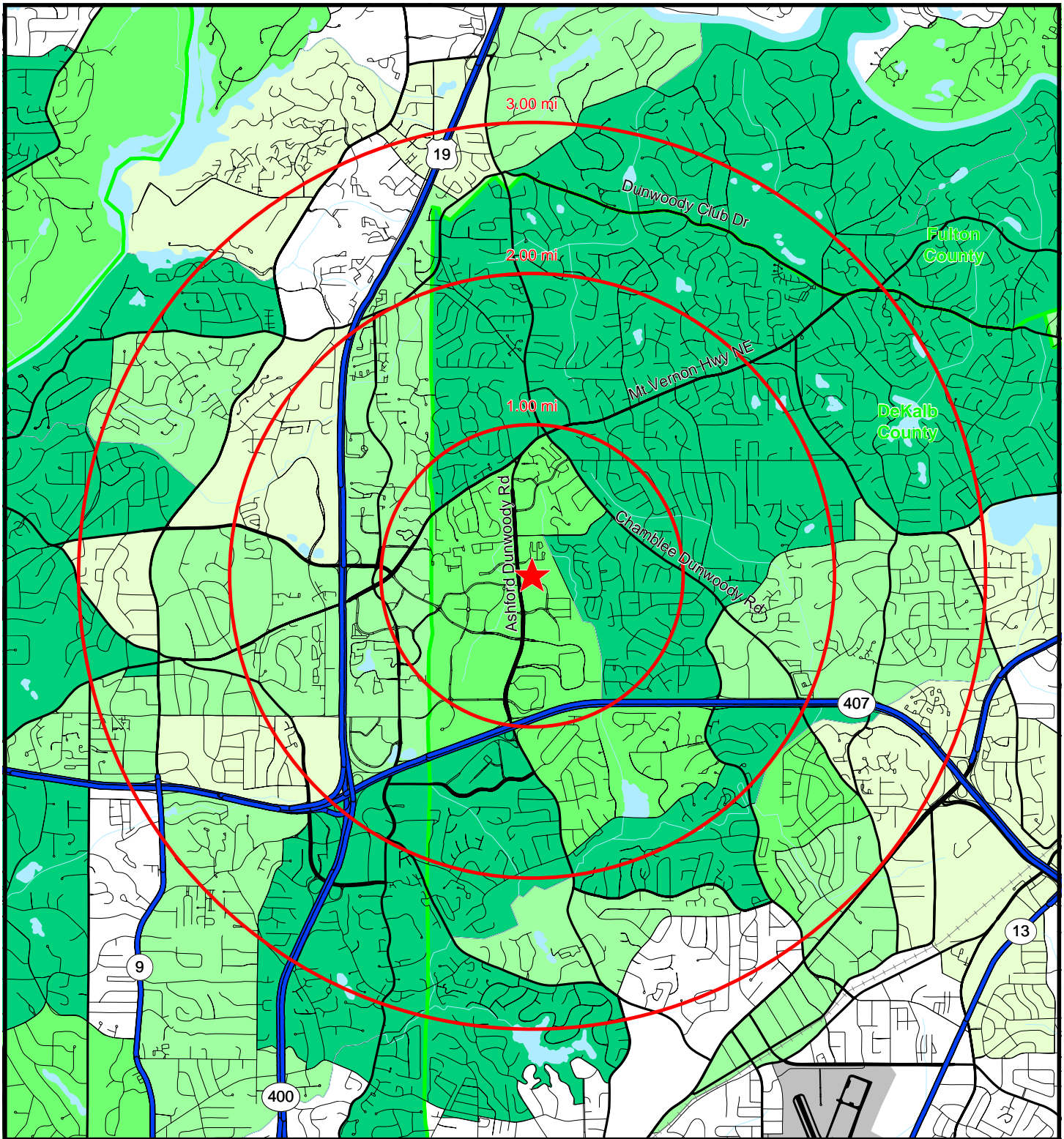
WEINGARTEN REALTY

Additional Information



Perimeter Village

Ashford Dunwoody Rd at Meadow Ln - Atlanta, GA

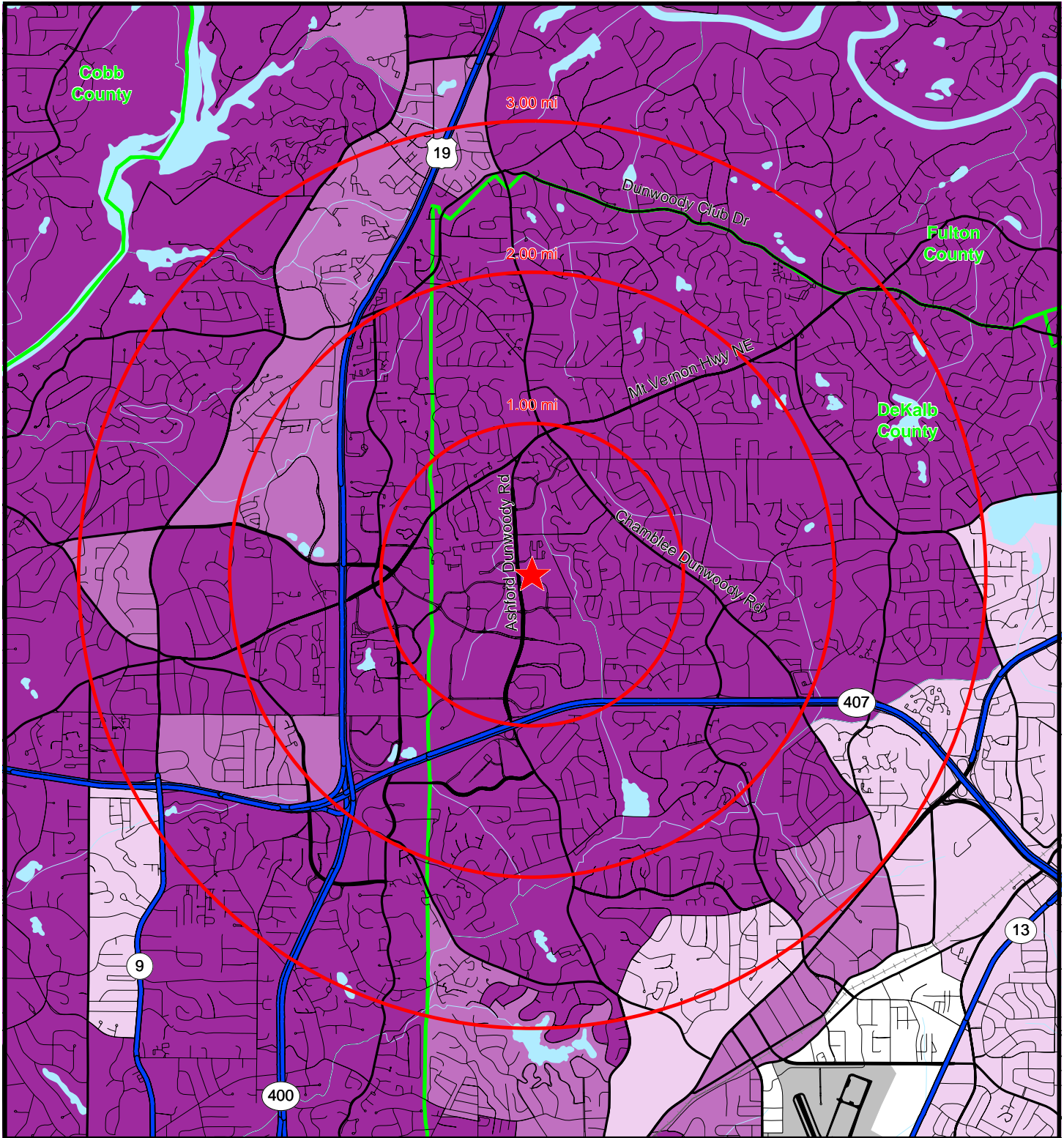


© 2006 Pitney Bowes MapInfo, Troy, New York. All rights reserved. 1-800-489-8829

<p>Median Household Income by Block Group</p> <ul style="list-style-type: none"> \$100,000+ \$80,000 To \$100,000 \$60,000 To \$80,000 \$50,000 To \$60,000 < \$50,000 	<h3 style="margin: 0;">WEINGARTEN REALTY</h3> <p style="margin: 0;">People-to-People. Coast-to-Coast.</p>	<p style="margin: 0;">N</p>  <p style="margin: 0;">0 0.7 1.4</p>  <p style="margin: 0;">Miles</p>
---	---	---

Perimeter Village

Ashford Dunwoody Rd at Meadow Ln - Atlanta, GA



© 2006 Pitney Bowes MapInfo, Troy, New York. All rights reserved. 1-800-489-8829

% College Graduates
by Block Group

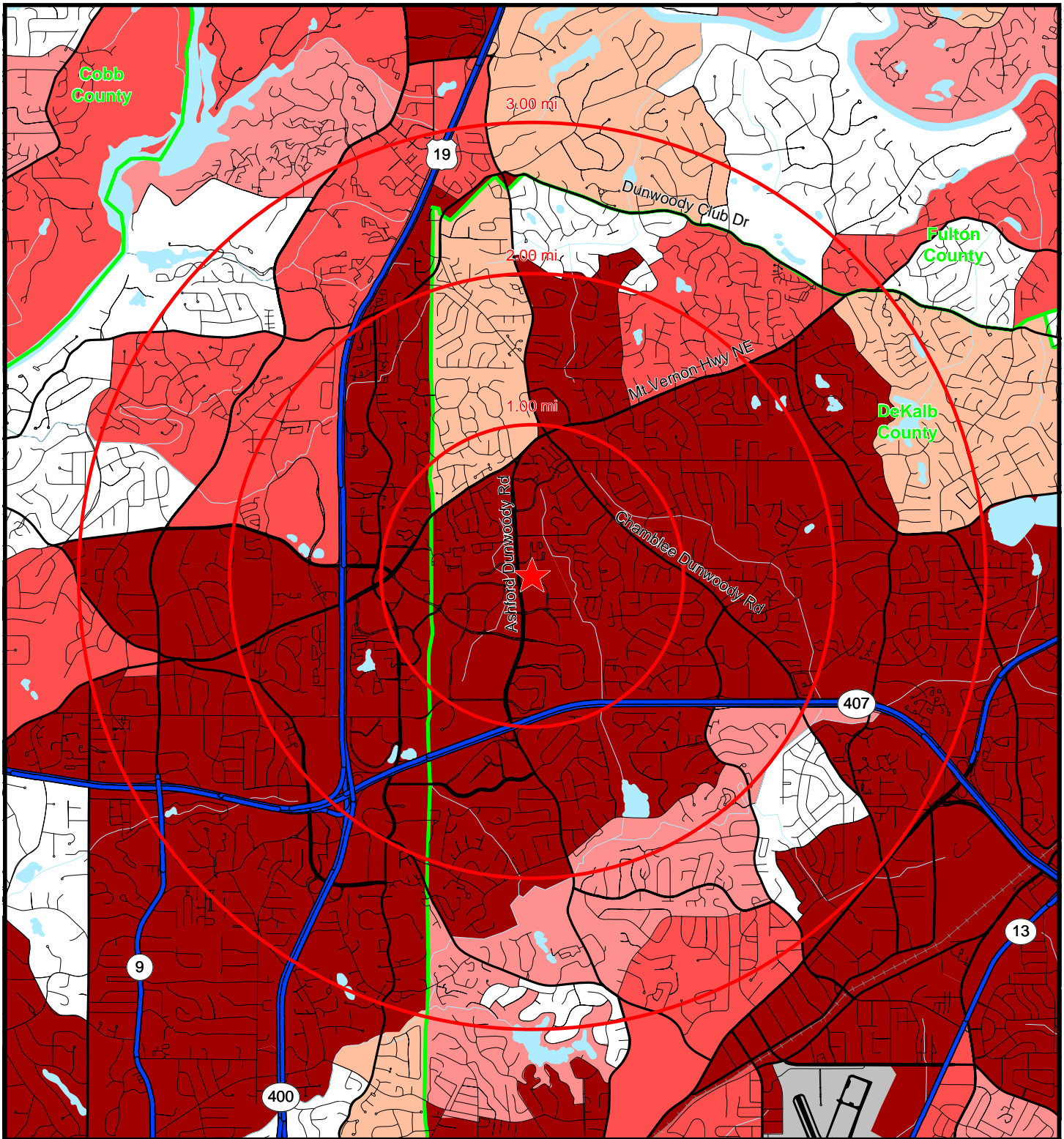
- 60% +
- 40.00% To 60.00%
- 20.00% To 40.00%
- < 20%

WEINGARTEN REALTY
People-to-People. Coast-to-Coast.



Perimeter Village

Ashford Dunwoody Rd at Meadow Ln - Atlanta, GA

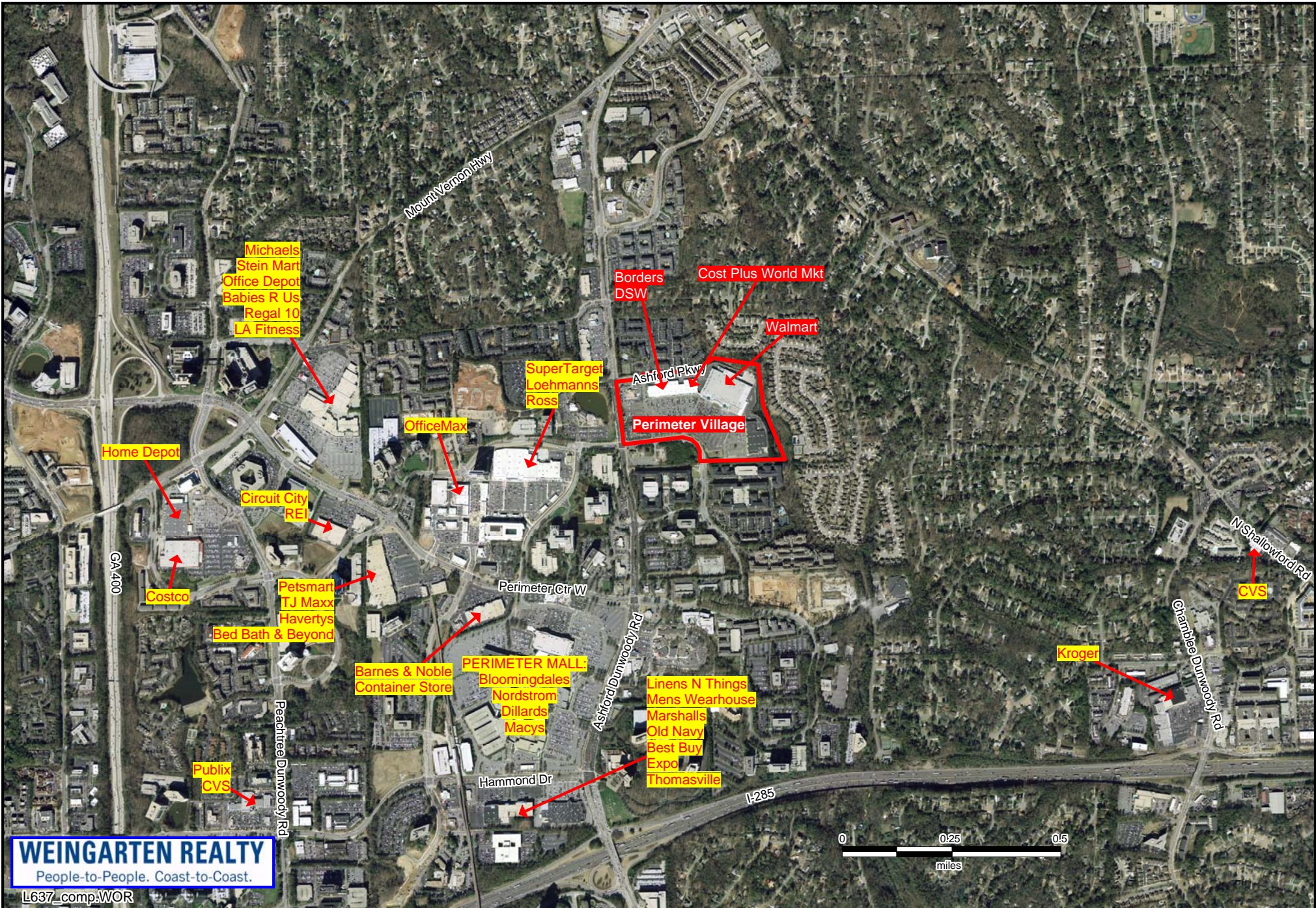


© 2006 Pitney Bowes MapInfo, Troy, New York. All rights reserved. 1-800-489-8829

<p>Workplace Employees (FTE) by Block Group</p>	<ul style="list-style-type: none"> 2,000+ 1,000 To 2,000 500 To 1,000 200 To 500 0 To 200 	<h3 style="margin: 0;">WEINGARTEN REALTY</h3> <p style="margin: 0;">People-to-People. Coast-to-Coast.</p>	 <p>0 0.7 1.4 Miles</p>
---	---	---	--

Perimeter Village

Ashford Dunwoody Rd at Meadow Ln - Atlanta, GA



WEINGARTEN REALTY

People-to-People. Coast-to-Coast.

L637_comp.WOR