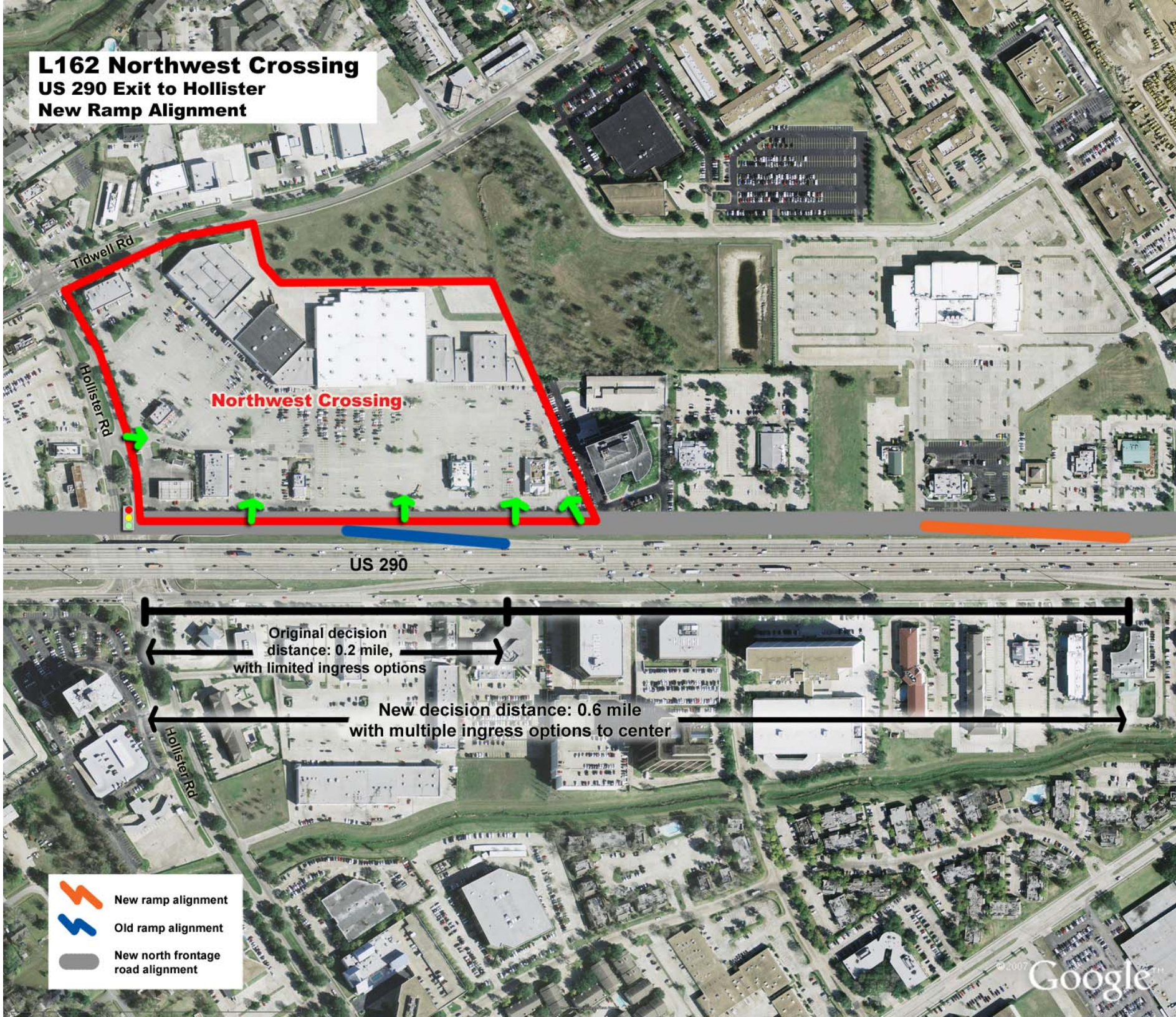


**L162 Northwest Crossing  
US 290 Exit to Hollister  
New Ramp Alignment**



**Northwest Crossing**




Tidwell Rd

Hollister Rd

US 290

Original decision distance: 0.2 mile, with limited ingress options

New decision distance: 0.6 mile with multiple ingress options to center

-  New ramp alignment
-  Old ramp alignment
-  New north frontage road alignment

